

RIHAN.CC

SPACE

# ENTERTAINMENT CENTER

H.K. RIHAN INT'L CULTURE SPREAD LIMITED



• **Company:** 3six0 Architecture

• **Project Location:** 35 Stanhope Street, Boston, Massachusetts

**Total Square Footage:** 1,500 Square Feet

**Photographer:** John Horner Photography

## STIX RESTAURANT AND LOUNGE

✔ New restaurant including bar and dining for 90 people on the ground floor and a bar and lounge for 60 people on the lower level.

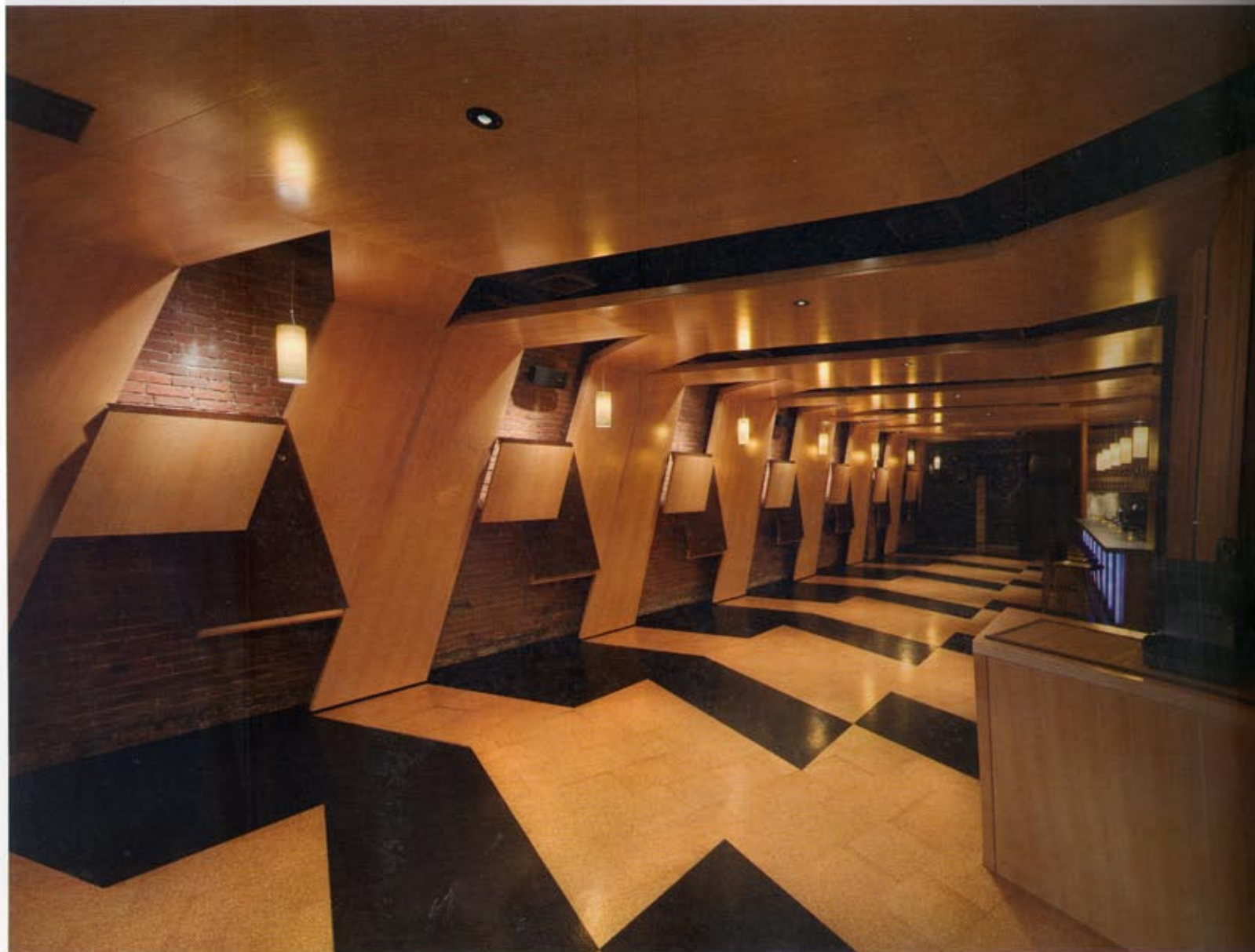
There were two main generative challenges inherent in the program. One was to create a sense of communal dining while maintaining a more private table configuration. The other was the need for two modes of operation; sit-down dining to standing room only. Given the lack of table storage, the design had to address these ambitions directly.

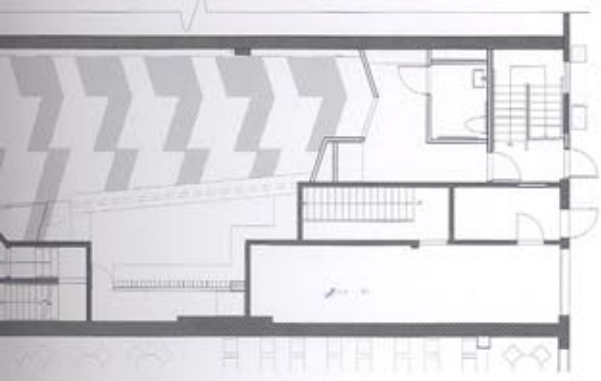
The solution to the challenges stated above was to create a continuous coil through the space.

On its way, the wood band folds up, out and over as wood wall panels, tables, floor bar. The experience is continuous from front to back, bar to restaurant and table to continuity is interrupted when the mode changes from sit-down dining to standing room only. Wood tables fold up into the wall panels clearing the floor and integrating into the grain of the walls.

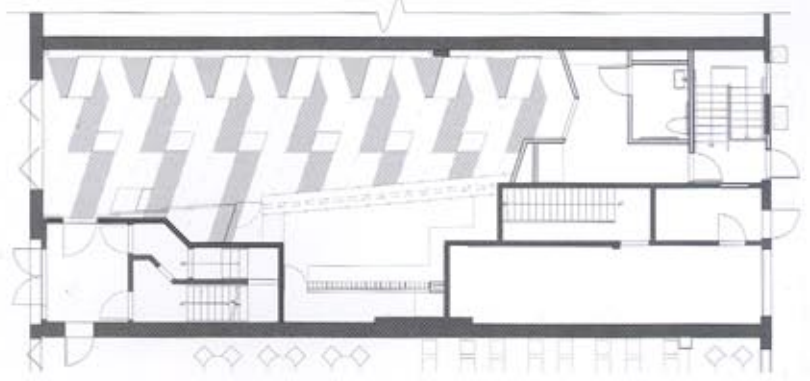
Quarter sawn oak veneer panels and cork flooring. ▲

The design is simple and natural of post-modern style.





Plan 1



Plan 2





The hall is long-shaped and the dining tables are designed to echo to the wall.







...atively designed to be foldable.